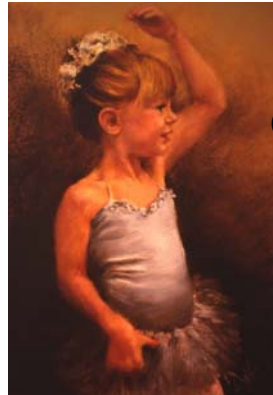




**CHICAGO PASTEL PAINTERS**  
2008 Member Show Prospectus

**STROKIN' TOO!**  
SECOND BIENNIAL MEMBER SHOW



*Best of Show 2006*  
*My Little Ballerina*  
Darlene J. Hoekstra

**MAY 3 - May 29, 2008**

**OLD TOWN ART CENTER**  
1763 N. NORTH PARK  
CHICAGO, IL. 60614

**OPENING RECEPTION**  
SUNDAY, MAY 4, 2008  
2:00 PM - 5:00 PM

**EXHIBITION HOURS**  
MONDAY - FRIDAY, 10:00 AM - 5:00 PM  
SATURDAY, 10:00 AM - 1:00 PM  
SUNDAY - BY APPOINTMENT

**DEADLINE FOR SLIDE/CD SUBMISSION**  
POSTMARKED BY MARCH 15, 2008

Chicago Pastel Painters is a society of professional artists dedicated to the education and promotion of the medium of pastel in the Chicagoland area.

**JUROR OF SELECTION & AWARDS**

**JIM MARKLE, PSA**

Jim Markle's work has received numerous awards and honors in many international, national and regional juried competitions.

He travels and paints 'en plein air' throughout the United States and Europe and is frequently asked to teach, lecture and judge shows at various schools, museums and art organizations.

In 1999 he was elected a Signature Member of the Pastel Society of America and in 2004 was elected a Master Member of the Great Lakes Plein Air Painters Association. He is a past president of both the Great Lakes Pastel Society and Grand Valley Artists.

Jim is the inventor of the Jim Markle Pastel Easelbox for location painting. Great American Art Works, a manufacturer of pastels for the professional, markets throughout the United States a "Jim Markle North American Landscape" set of pastels. He is represented in Michigan by the Grand Gallery in Grand Rapids, East Grand Rapids and Ada and the Lansing Art Center in Lansing.

**CALENDAR**

SLIDE DEADLINE  
Postmarked by **MARCH 15, 2008**

NOTIFICATION  
Week of **APRIL 7, 2008**

SHIPPING DEADLINE  
**APRIL 30, 2008**

HAND DELIVERY  
**MAY 1, 2008 - 5:00 PM - 8:00 PM**  
**MAY 2, 2008 - 10:00 AM - 12 NOON**

OPENING RECEPTION AND AWARDS  
**MAY 4, 2008 - 2:00 PM - 5:00 PM**

CLOSING  
**MAY 29, 2008**

PICK-UP WORK  
**MAY 29, 2008 - 5:00 PM - 8:00 PM**  
**MAY 30, 2008 - 10:00 AM - 12 NOON**